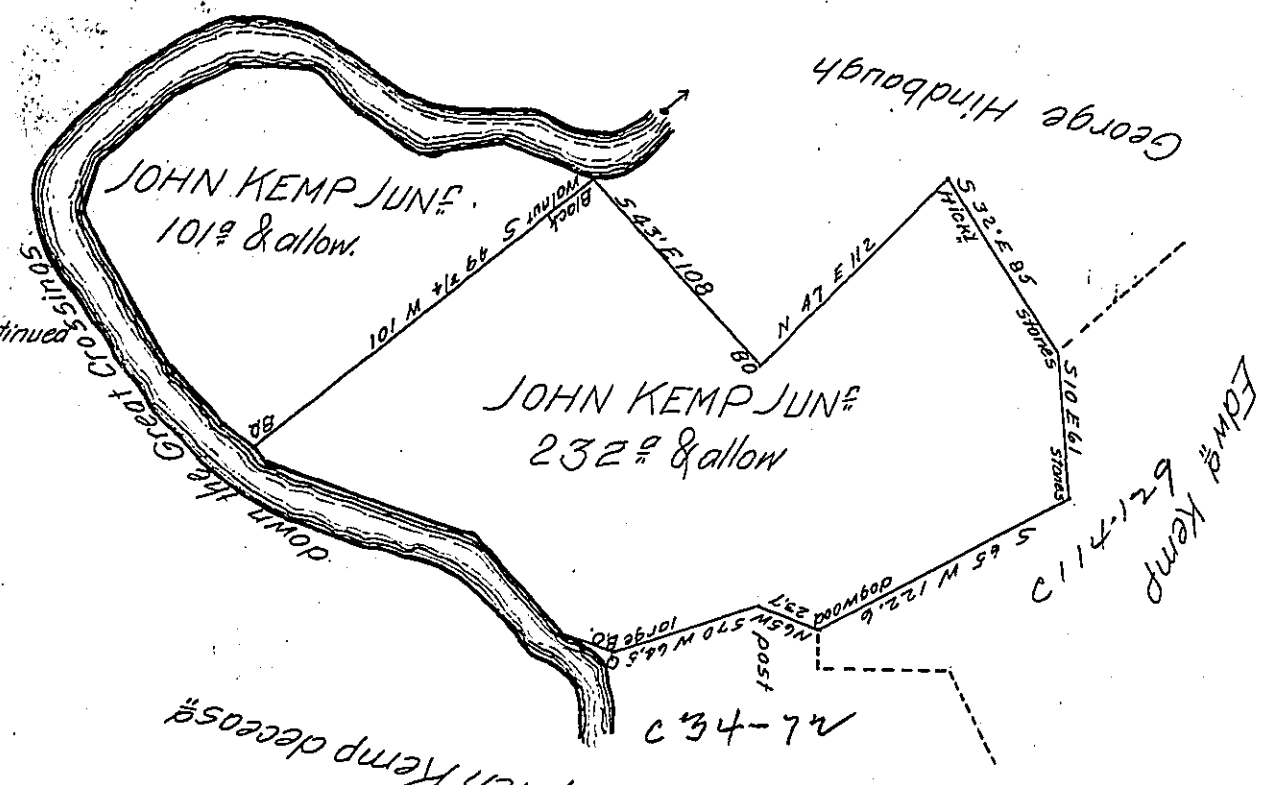


The Courses and distances down the Big Crossings of Youghiogeni River from large B.O. to B.O on the South Bank

- N 75 W 23 P $\frac{1}{2}$
- N 47 W 18
- N 38 W 40
- N 72 W 90
- N 54 $\frac{1}{2}$ W 85 $\frac{1}{4}$
- To B.O. at End of the division line thence Continued
- N 54 $\frac{1}{2}$ N 21 $\frac{1}{2}$ P $\frac{1}{2}$
- N 36 $\frac{1}{2}$ N 30
- N 32 W 60
- N 23 W 14
- N 9 E 17
- N 46 E 30
- N 57 $\frac{1}{2}$ E 138
- N 70 E 27
- N 80 E 178
- S 72 E 128
- S 48 E 24,5
- S 60 E 25
- N 88 E 18,5
- S 88 E 15,5
- S 75 E 43 P $\frac{1}{2}$

To Black Walnut down the River



* 85 to be added 216

Situate on the East Side of the Great Crossing of Youghiogeni River (so called) now in Addison Township Somerset County and Surveyed the day of _____ In pursuance of Two Warrants Viz. One dated the 10th day of June 1795 for 100 $\frac{1}{2}$ the other dated the first day of May 1804 for 232 $\frac{1}{2}$ by Alexander Mc Clean Esq^r then D.S. as appears by his ^{draught} Official in my office. And Certified the first day of May 1810

To Andrew Porter Esquire
Surveyor General

P^r John Mc Clean Deputy

IN TESTIMONY that the above is a copy of the original remaining on file in the Department of Internal Affairs of Pennsylvania, made conformably to an Act of Assembly approved the 16th day of February, 1833, I have hereunto set my Hand and caused the Seal of said Department to be affixed at Harrisburg, this third day of AUGUST 1905

Loach D. Johnson
Secretary of Internal Affairs.